



imaging all the women



ReseCare

Two models of
6mm resectoscopes
respecting all the women



The ReseCare set - Ref D400 100 026 includes :

HD Hysteroscope, 2.9mm, 12°
Autoclavable, L: 300mm
Ref. D300 100 004



Outer sheath, 18.5Fr.
Double flow. Quick lock.
Ref. D300 130 000



Inner sheath, 17.5Fr.
Rotatable
Ref. D300 130 001



Passive working element
Compatible monopolar & bipolar
Ref. D300 130 002






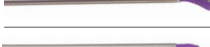

Active working element
Compatible monopolar & bipolar
Ref. D300 130 009



Light cable
Autoclavable, Ø: 3.5mm, L : 2.3m, supplied with Storz connectors
Ref. D200 150 500



Electrodes:

Description	Reference	
	Sterile, single use (Delivery in boxes of 10)	Reusable (Delivery in boxes of 4)
 Cutting loop, 30°	D300 140 067	D300 140 000
 Cutting loop, straight	D300 140 068	D300 140 001
 Knife electrode	D300 140 069	D300 140 002
 Rollerball electrode	D300 140 070	D300 140 003
 Vaporization electrode, rollerball with tips	D300 140 091	D300 140 090

Accessories:

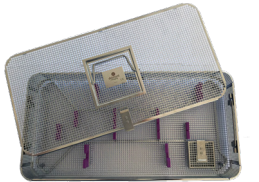
Obturator
Quick lock
Ref. D300 130 003



Sterilization tube
Autoclaving and storage of electrodes
Ref. D200 160 003



ReseCare sterilization basket
Autoclavable. 540x240x70mm. With personalized silicone holders
Ref. D200 160 504



iSpark bipolar resection cable
SDS-plug
Ref. D200 190 007

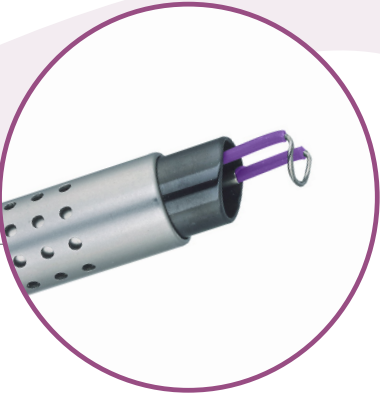
Erbe MF bipolar resection cable
VIO300D & VIO3
Ref. D200 190 001



Zone Athélia IV - 297, Avenue du Mistral - 13600 La Ciotat - France
Tél : +33 (0) 9 51 51 30 30 - Fax : +33 (0) 9 57 51 31 00
www.delmont-imaging.com - contact@delmont-imaging.com

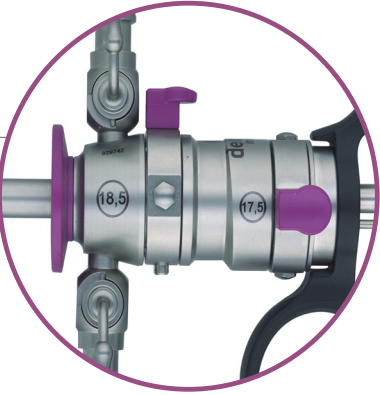
Quality to the last detail

A good image also results from a controlled and performing «suction-irrigation» couple. The black ceramic eliminates all reflections.



Quick lock

The end of difficult lockings.



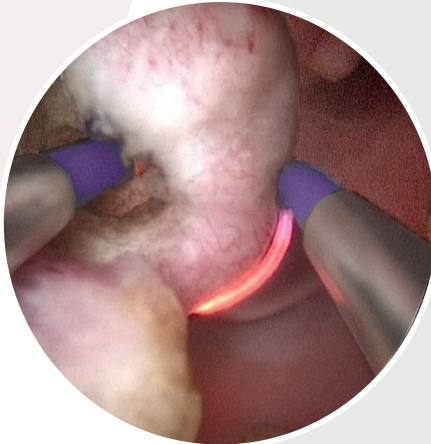
Comfort and precision guaranteed

The ultra-light PEEK handle avoids fatigue during the surgery. An ergonomic position is provided for each of your fingers. You will have a better hold of the resectoscope and your gesture will be more accurate.



Inner rotatable sheath

For a greater freedom of movement during the surgery. Do not let your tools limit you!

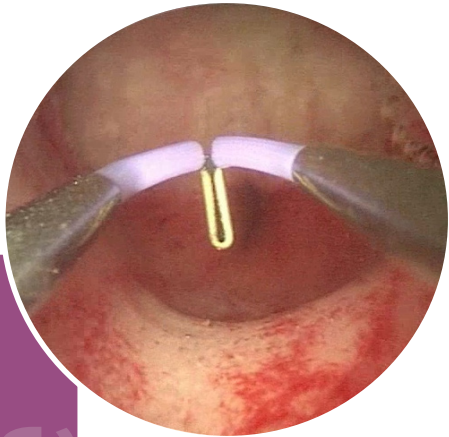


Bipolar resection

The advantages of this now widely used technology are twofold. First, the electric current no longer passes through the patient but directly returns to the generator through the resectoscope itself, reducing the risk of burns and synechiae. But also and above all, a monopolar resectoscope has to use glycocolle whose absorption by the patient is source of ionic disorders. In contrast, a bipolar resectoscope uses a saline solution which is not toxic, and moreover less expensive. Connected to a bipolar generator, **ReseCare** offers you this extra serenity. It is nevertheless **compatible** and works perfectly with all monopolar generators.

These medical devices are regulated health products that bear, under this regulation, the CE 1304 mark. They are manufactured by Delmont Imaging. They are intended for professional use only. Read the instructions carefully before use.

Non contractual document. SAS Delmont Imaging, RCS Marseille B 817 710 411. All rights reserved. No information or part of this document may be reproduced or modified in any form without prior permission from Delmont Imaging. REF. D900 700 001. © EN 2025-03. Printed by GRAFIKOM. Do not dispose of in the public domain.

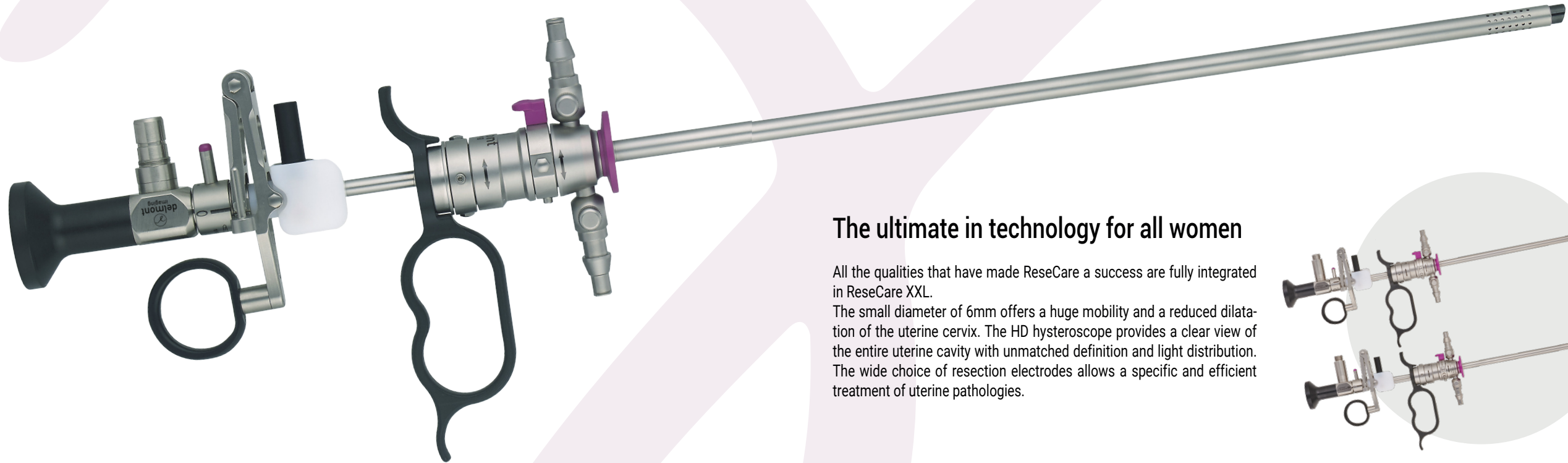


A 18.5Fr. only resectoscope

Small, but efficient!

The advantages of this small diameter are various, both for the surgeon and the patient. With **ReseCare**, your surgical gesture is precise but also faster since the stages of dilation are less numerous. The chips being small, their presence is less penalizing for your vision and your comfort of work. **ReseCare** respects your patients. The insertion resistance is naturally reduced and the use facilitated, even for menopausal women or with a stenotic cervical canal. As a result, the volume of fluid absorbed by the patient is less and confirmed by a systematic input/output balance.

"After three years of continuous use, we can't get enough of ReseCare! It is faster, simpler and less traumatic."
Prof. Hervé Fernandez, President of Delmont imaging scientific council. World-renowned hysteroscopy expert.



10
cm

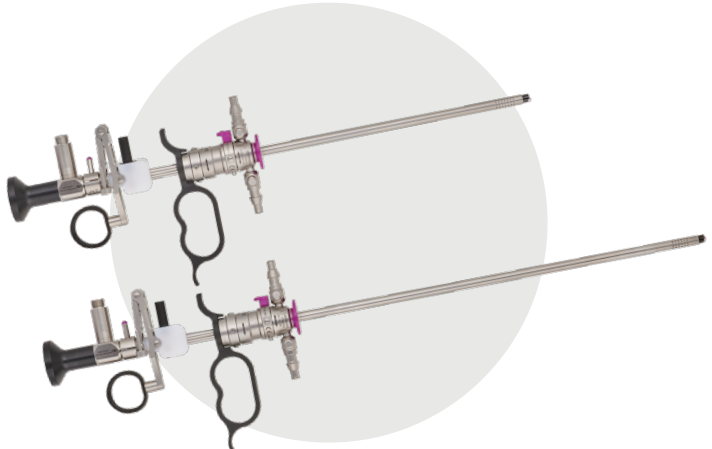
ReseCare XXL

The latest but not the least model of the range!

It is the length that differentiates ReseCare XXL from ReseCare, and that will allow you to treat your patients with a large uterus or who are overweight limiting the use close to the cervix. Unique on the market, its 287mm working length allows an effortless access to all uterine cavities, including the ostia edges and fundal region, where a standard resectoscope would fail. This new product is the perfect solution that takes into consideration the singularities of all women without compromising the surgeon's comfort. It fits a current need of all health centers for specialized equipment, which will tend to increase in the future.

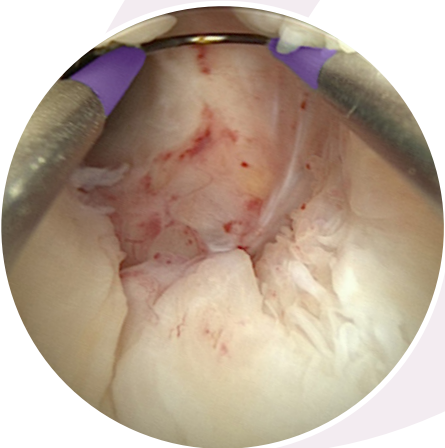
The ultimate in technology for all women

All the qualities that have made ReseCare a success are fully integrated in ReseCare XXL. The small diameter of 6mm offers a huge mobility and a reduced dilation of the uterine cervix. The HD hysteroscope provides a clear view of the entire uterine cavity with unmatched definition and light distribution. The wide choice of resection electrodes allows a specific and efficient treatment of uterine pathologies.



HD Hysteroscope: unmatched performances and outstanding durability

Our latest generation of lenses, designed to take full advantage of HD, provides detailed and perfectly clear images even in the backgrounds. This hyper resolution together with a real homogeneous light distribution provides a huge depth of field. The whole image will be sharp! Our HD hysteroscope is of course autoclavable. Its three separate tubes design makes it resistant, durable but also easily repairable in case of accident.



A diagnostic set also available in XXL version






Just like ReseCare, the XXL diagnostic set provides better visibility of large or difficult-to-reach uterine cavities. Benefit from the same high definition image quality for an easier diagnosis. Both diagnostic and operative, the length and diameter of our new XXL products can match the needs of your patients.



The **ReseCare XXL** set - Ref D400 100 037 includes :

- HD Hysteroscope, 2.9mm, 12°**
Autoclavable, L: 395mm
Ref. D300 100 087
- Outer sheath, 18.5Fr.**
XXL version. Double flow. Quick lock.
Ref. D300 130 088
- Inner sheath, 17.5Fr.**
XXL version. Rotatable
Ref. D300 130 089

Reusable electrodes:

Description		Reference
	Cutting loop, 30° - XXL	D300 140 086
	Cutting loop, straight - XXL	D300 140 087
	Knife electrode - XXL	D300 140 088
	Rollerball electrode - XXL	D300 140 089
	Vaporization electrode, rollerball with tips - XXL	D300 140 122

Accessories:

- Obturator**
XXL version. Quick lock
Ref. D300 130 091
- Sterilization tube**
Autoclaving and storage of XXL electrodes
Ref. D200 160 034

- ReseCare XXL sterilization basket**
Autoclavable. 540x240x70mm. With personalized silicone holders
Ref. D200 160 504

Diagnostic set:

- HD Hysteroscope, 2.9mm, 30°**
Autoclavable, L: 395mm
Ref. D300 100 088
- Graduated diagnostic sheath, 4mm**
XXL version. For 12° or 30° XXL hysteroscope
Ref. D300 110 072
- Sterilization basket for two instruments**
492x134x65mm. With personalized silicone holders
Ref. D200 160 507