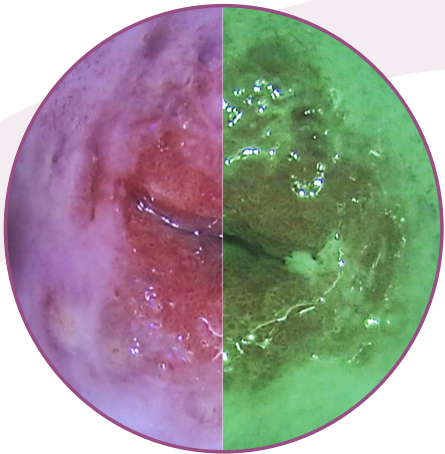


Enjoy an extra-sharp image!

Our apochromatic lenses compensate chromatic and spherical aberrations, providing a faithful image with optimal colour rendering. The green filter of our colposcopes is essential to increase the contrast between the mucous membrane and the blood vessels. Rough surfaces, granulation and hyper-vascularized areas will be quickly and easily identified.



A full range of solutions for a product adapted to your needs

Whether you're looking for a minimum footprint, an obstacle-free workspace or the comfort of a swing arm, all these configurations are available in our range. The handling and balance of our arms allow you to move them with one single finger!



And among our wide choice of accessories, whether you want to connect a camera, view the image on a monitor or use a laser, we have a solution for you!



References and specifications of our Colposcopes:

Colposcope swing arm

5 magnifications: 2.83x; 4.25x; 7.08x; 11.33x; 17.71x  
Weight: 44kg  
Height adjustment range: 335 - 1 295mm

Specifications:

Light: LED 100 000 lux  
Apochromatic lenses  
Eyepiece: 12.5x  
45° Binocular  
Green filter

300mm fixed lens  
11mm fine focus range  
Ref. D100 300 502

Variable focal length lens  
F=200 - 350mm  
Ref. D100 300 503



Colposcope over-the-shoulder

5 magnifications: 2.83x; 4.25x; 7.08x; 11.33x; 17.71x  
Weight: 44kg  
Height adjustment range: 635 - 1 295mm

Specifications: See Colposcope swing arm

300mm fixed lens  
11mm fine focus range  
Ref. D100 300 506

Variable focal length lens  
F=200 - 350mm  
Ref. D100 300 507



Colposcope vertical post

3 magnifications: 4.25x; 7.08x; 11.33x  
Weight: 18.14kg  
Height adjustment range: 1 016 - 1 193mm

Specifications: See Colposcope swing arm

300mm fixed lens  
11mm fine focus range  
Ref. D100 300 500

Variable focal length lens  
F=200 - 350mm  
Ref. D100 300 501



Optional accessories:

Double beamsplitter

50/50 & 20/80  
Ref. D100 300 003



Adapter for video camera

Compatible C & CS mount  
Ref. D100 300 005



iCare mini

Colposcopy camera with HD CMOS sensor  
CS mount connector  
1 micro HDMI video output  
Ref. D100 300 550



iPad Pro® 12.9" 256Gb

Retina display, resolution of 2 732 x 2 048  
Supplied with keyboard and stylus.  
Ref. D100 200 500

imagyn license

Colposcopy database management application for iPad.  
Without data backup functionality. Without interoperability.  
Ref. D100 200 114



Zone Athélia IV - 297, Avenue du Mistral - 13600 La Ciotat - France  
Tél : +33 (0) 9 51 51 30 30 - Fax : +33 (0) 9 57 51 31 00  
www.delmont-imaging.com - contact@delmont-imaging.com



imaging all the women

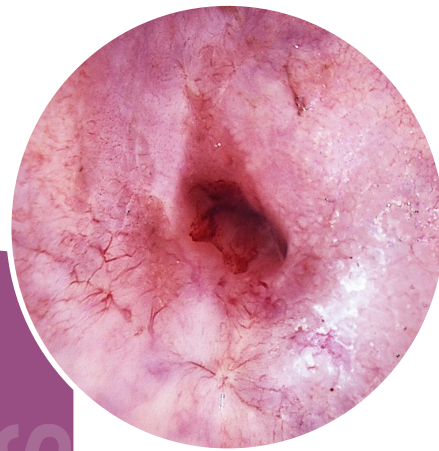


Our colposcopes  
now combined with iCare<sup>mini</sup>  
for even greater performance



These medical devices are regulated health products which carry the CE mark. They are class I products manufactured by Delmont Imaging. They are intended for professional use only. Please read the instructions carefully before use.  
Non contractual document. SAS Delmont Imaging, RCS Marseille B 817 710 411. All rights reserved. No information or part of this document may be reproduced or modified in any form without prior permission from Delmont Imaging.  
REF D900 700 111 CEN 2024-01. Printed by GRAFIKOM. Do not dispose of in the public domain.





## A full range of colposcopes

### Exceptional image quality and outstanding performance

The optical components of our colposcopes are manufactured in Germany. They guarantee perfect image quality and high-precision examinations.

We offer you the right solution for your practice from a wide range of models and accessories. In addition, the intuitive report generated by our application **imagyn™** will enhance your patient communication.



## An optical system to enhance your working comfort

With our Variofocus lens, you can stay sharp over a working distance of 200 to 350mm. No need to move the colposcope forward or backward during the examination for good visualization of the cervix and vagina.

The inter-pupillary distance and the dioptres are adjustable on all our models for a perfect adaptation to your eyesight. Last, you will always get the exact field of view you want, thanks to the different levels of magnification available.



## Discover a new way to manage your colposcopy reports!

With its HD CMOS sensor, our new iCare mini camera allows you to take photos and videos of your examinations. Connected directly to the colposcope, and thanks to its reduced size, your workspace is optimised. Designed to be used in association with our **imagyn** application, this duo is sure to win you over!

Developed for iPad Pro and available on the AppStore, our **imagyn** application allows you to manage your colposcopy exams. From the creation of the patient file to the sharing of the report, everything has been designed to offer you a high-level user experience: the perfect alliance between efficiency, relevance and intuitiveness.



## View the exam on the iPad Pro

The iCare mini video stream is available on the iPad Pro during the exam through our private and secure Wi-Fi.

This means you can point the iPad screen at your patient for educational communication of the exam, or simply use it as a control screen.

## A complete report in just a few clicks!

Everything has been thought out in order to transform the laborious task of writing a report into a quick and intuitive experience, without sacrificing either its quality or its completeness. In just a few seconds, finalize your document which includes: annotatable anatomical drawings and photos of the examination, and more than a dozen text fields to fill in.

The quality of the reports you share with your patients and colleagues has never been so high!



## In office setting or in the hospital, imagyn adapts to your needs

In an office practice, back up and secure your data on a NAS (Network Attached Storage) compatible with **imagyn**. Whatever the situation with your iPad (loss, breakage, etc.) you can restore all your information on a new iPad.

In the clinic or hospital, share examination reports over the network so that they automatically integrate into the electronic health record (EHR). Don't waste time doing this manually, **imagyn** and **iCare mini** do it for you using the standardised HL7 protocol. The Worklist can also be provided to **imagyn** by the care centre using the DICOM standard.