



*imaging all the women*

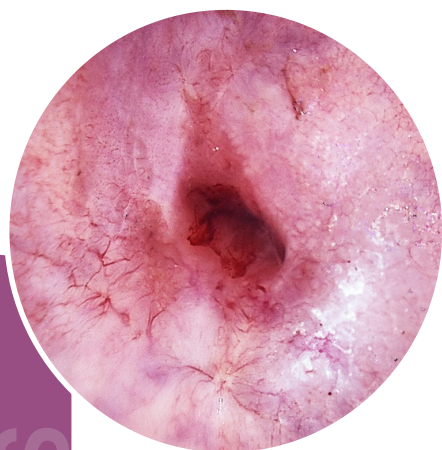


**NEW**

## Our colposcopes

now combined with **iCare<sup>mini</sup>**  
for even greater performance

  
**delmont**  
imaging



## A full range of colposcopes

### Exceptional image quality and outstanding performance

The optical components of our colposcopes are manufactured in Germany. They guarantee perfect image quality and high-precision examinations. We offer you the right solution for your practice from a wide range of models and accessories. In addition, the intuitive report generated by our application *imagyn™* will enhance your patient communication.

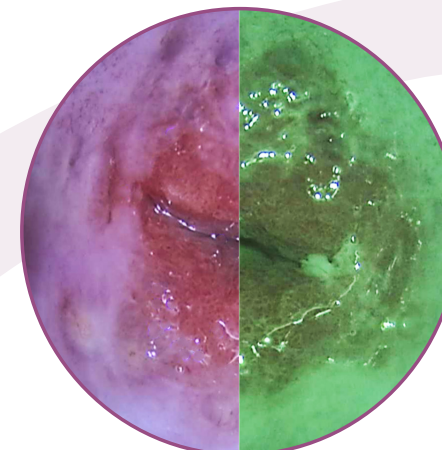


## An optical system to enhance your working comfort

With our Variofocus lens, you can stay sharp over a working distance of 200 to 350mm. No need to move the colposcope forward or backward during the examination for good visualization of the cervix and vagina. The inter-pupillary distance and the dioptres are adjustable on all our models for a perfect adaptation to your eyesight. Last, you will always get the exact field of view you want, thanks to the different levels of magnification available.

## Enjoy an extra-sharp image!

Our apochromatic lenses compensate chromatic and spherical aberrations, providing a faithful image with optimal colour rendering. The green filter of our colposcopes is essential to increase the contrast between the mucous membrane and the blood vessels. Rough surfaces, granulation and hyper-vascularized areas will be quickly and easily identified.



## A full range of solutions for a product adapted to your needs

Whether you're looking for a minimum footprint, an obstacle-free workspace or the comfort of a swing arm, all these configurations are available in our range. The handling and balance of our arms allow you to move them with one single finger!



And among our wide choice of accessories, whether you want to connect a camera, view the image on a monitor or use a laser, we have a solution for you!





# imagyn X iCare<sup>mini</sup>

## Discover a new way to manage your colposcopy reports!

With its HD CMOS sensor, our new iCare mini camera allows you to take photos and videos of your examinations. Connected directly to the colposcope, and thanks to its reduced size, your workspace is optimised. Designed to be used in association with our imagyn application, this duo is sure to win you over!

Developed for iPad Pro and available on the AppStore, our imagyn application allows you to manage your colposcopy exams. From the creation of the patient file to the sharing of the report, everything has been designed to offer you a high-level user experience: the perfect alliance between efficiency, relevance and intuitiveness.



### View the exam on the iPad Pro

The iCare mini video stream is available on the iPad Pro during the exam through our private and secure Wi-Fi. This means you can point the iPad screen at your patient for educational communication of the exam, or simply use it as a control screen.

### A complete report in just a few clicks!

Everything has been thought out in order to transform the laborious task of writing a report into a quick and intuitive experience, without sacrificing either its quality or its completeness. In just a few seconds, finalize your document which includes: annotatable anatomical drawings and photos of the examination, and more than a dozen text fields to fill in. The quality of the reports you share with your patients and colleagues has never been so high!



Network Attached Storage (NAS)



Interoperability

### In office setting or in the hospital, imagyn adapts to your needs

In an office practice, back up and secure your data on a NAS (Network Attached Storage) compatible with imagyn. Whatever the situation with your iPad (loss, breakage, etc.) you can restore all your information on a new iPad.

In the clinic or hospital, share examination reports over the network so that they automatically integrate into the electronic health record (EHR). Don't waste time doing this manually, imagyn and iCare mini do it for you using the standardised HL7 protocol. The Worklist can also be provided to imagyn by the care centre using the DICOM standard.

# References and specifications of our **Colposcopes**:

## Colposcope swing arm

5 magnifications: 2.83x; 4.25x; 7.08x; 11.33x; 17.71x

Weight: 44kg

Height adjustment range: 335 - 1 295mm

### Specifications:

Light: LED 100 000 lux

Apochromatic lenses

Eyepiece: 12.5x

45° Binocular

Green filter

300mm fixed lens

11mm fine focus range

**Ref. D100 300 502**

Variable focal length lens

F=200 - 350mm

**Ref. D100 300 503**



## Colposcope over-the-shoulder

5 magnifications: 2.83x; 4.25x; 7.08x; 11.33x; 17.71x

Weight: 44kg

Height adjustment range: 635 - 1 295mm

### Specifications: See Colposcope swing arm

300mm fixed lens

11mm fine focus range

**Ref. D100 300 506**

Variable focal length lens

F=200 - 350mm

**Ref. D100 300 507**



## Colposcope vertical post

3 magnifications: 4.25x; 7.08x; 11.33x

Weight: 18.14kg

Height adjustment range: 1 016 - 1 193mm

### Specifications: See Colposcope swing arm

300mm fixed lens

11mm fine focus range

**Ref. D100 300 500**

Variable focal length lens

F=200 - 350mm

**Ref. D100 300 501**



## Optional accessories:

### Double beamsplitter

50/50 & 20/80

**Ref. D100 300 003**



### Adapter for video camera

Compatible C & CS mount

**Ref. D100 300 005**



### iCare mini

Colposcopy camera with HD CMOS sensor

CS mount connector

1 micro HDMI video output

**Ref. D100 300 550**



### iPad Pro® 12.9" 256Gb

Retina display, resolution of 2 732 x 2 048

Supplied with keyboard and stylus.

**Ref. D100 200 500**

### imagyn license

Colposcopy database management application for iPad.

Without data backup functionality. Without interoperability.

**Ref. D100 200 114**