



# iSpark Training

HF Generator

# Designed for specialist treatments





- Compact size
- 400W maximum power
- Integrated argon module
- Two universal outputs
- Power monitor
- Upgradeable by software updates
- Automatic detection of connected cable

# Benefits

- Automatic power regulation
- Neutral Electrode Monitor
- Upgrades possible at any time through USB



# **Configurable software**

**Standard surgery**

**Gastroenterology**

**ThermoStapler®**

**Argon**

**Arthroscopy**

**Urology/Gynecology**



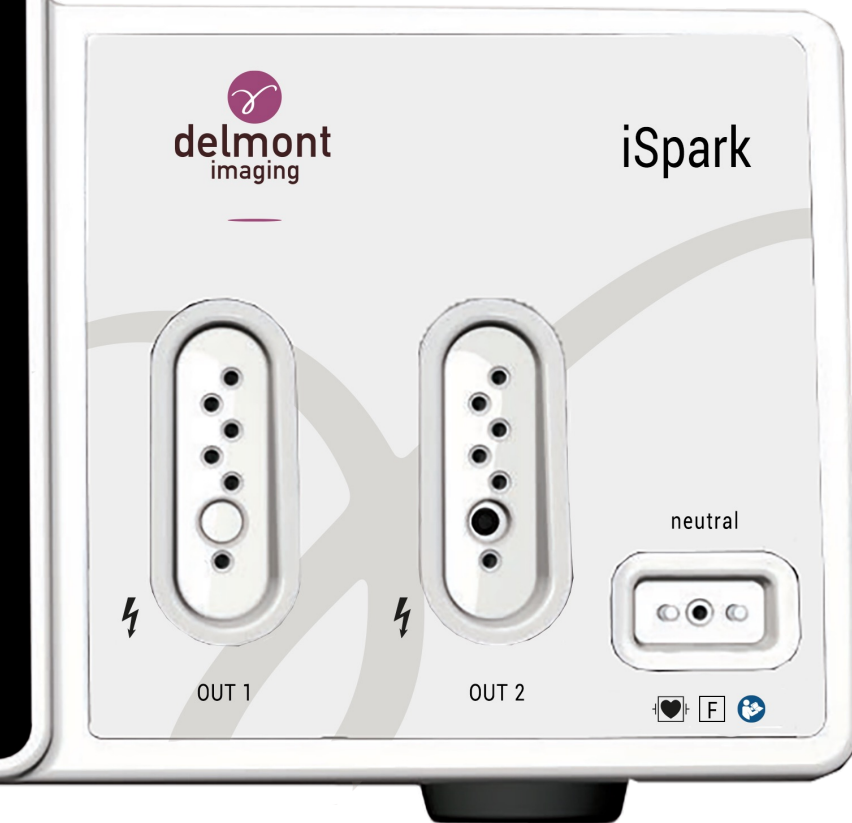
# Upgradeable by USB





# ISPARK OVERVIEW

# Smart Device System (1/2)



- **Recognition of connected accessories**
- **Integrated argon connection**
- **Universal sockets monopolar/bipolar**



## 🌀 Smart Device System (2/2)

- Ensuring greater comfort and safety of work
- Reduces time of procedure preparation
- Minimizes the risk of using improper setting or mode
- Plug'n'play

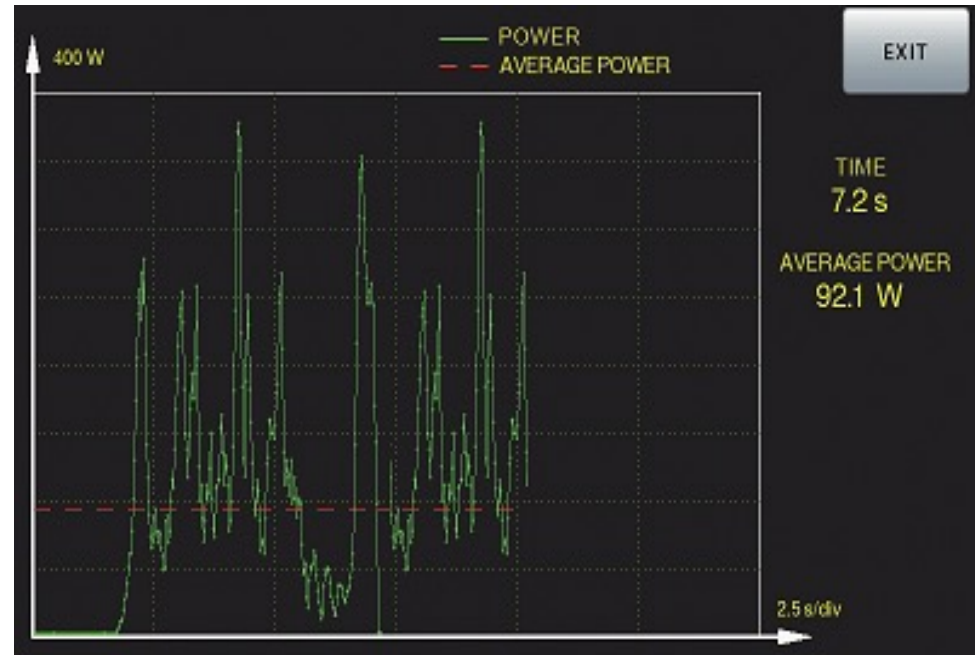


# Power monitor (1/2)



# Power monitor (2/2)

- **Average power**  
(display in Watts)
- **Diagram** of maximum delivered power
- **Time of HF** current application
- **Safety assurance** for the operator



# Neutral Electrode Monitor (1/2)



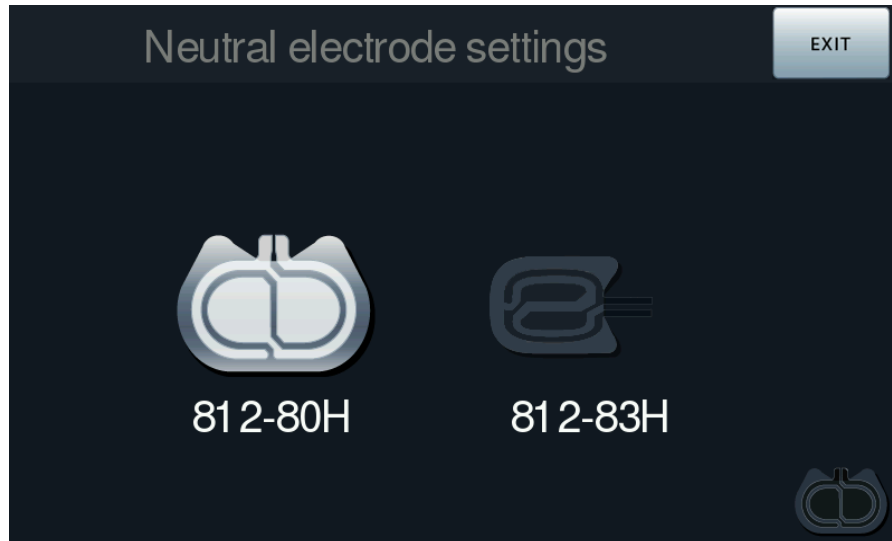
## ⌘ Neutral Electrode Monitor (2/2)

- **Constant** monitoring of neutral electrode application



# Two types of neutral electrodes

- For neonatal neutral electrode power limited to 150W
- Specialized modes are automatically disabled



# Multiple applications



# Monopolar modes



- Max. 400W  
for CUT modes
- Max. 200W  
for COAG modes
- 9 effects  
for each mode
- Max. 80W  
for SPRAY COAG



# Bipolar modes



- Max. 400W  
for CUT modes
- Max. 200W  
for COAG modes
- 9 effects  
for each mode
- AutoStart and AutoStop  
features for bipolar coagulation

# ThermoStapler vessel sealing



**Max. 60W**

- 9 effects  
in each mode
- Real-time measurements  
of output parameters
- Automatic regulation  
of output power
- Automatic stop  
to assure optimal sealing effect



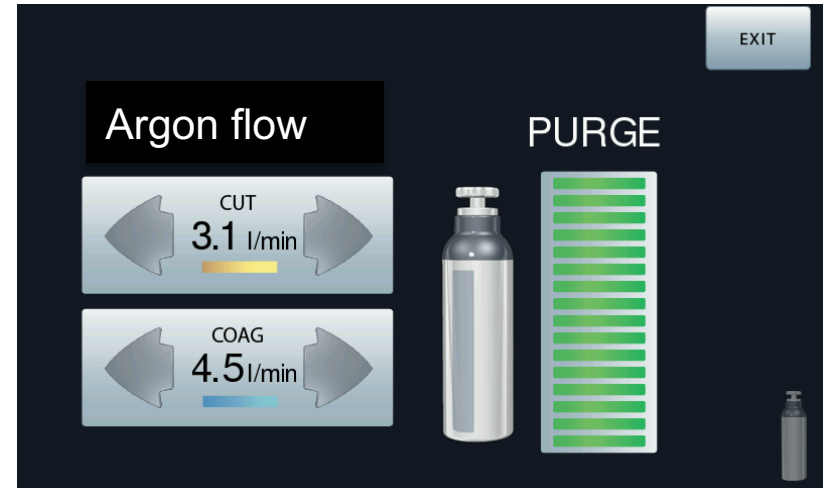
**Max. 300W**

# Argon (1/2)



# Argon (2/2)

- 5L or 10L argon cylinder
- Special SDSA connection
- Argon pressure sensor
- PURGE reminder
- Argon flow range:
  - up to 3L for endoscopy
  - up to 10L for open surgery and laparoscopy



# Open surgery

- **9 effects**  
max. 400W for CUT
- **Max. 80W**  
for COAG
- **Argon flow regulation**  
up to 10L/min
- **PURGE feature**



# Endoscopy

- **Max. 40W**
- Specially designed for gastroenterology and bronchoscopy
- Argon flow limited up to 3L/min
- PURGE feature
- Pulse mode for delicate structures



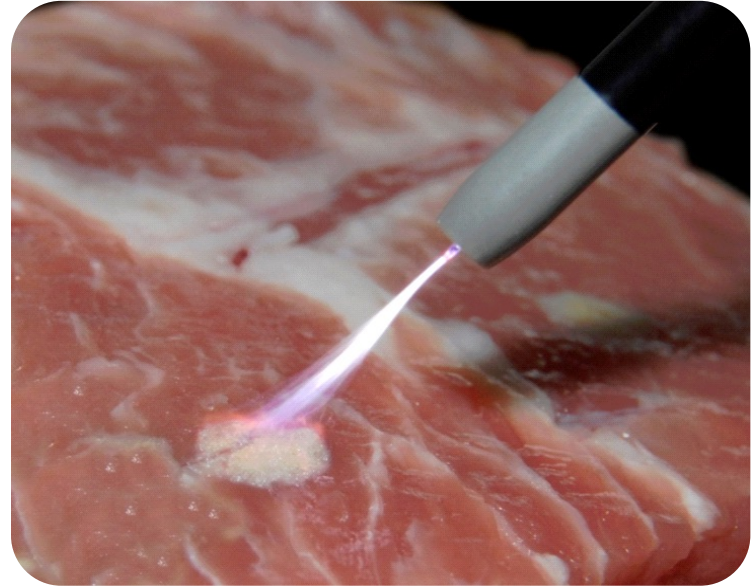
# SDSA

- Integrated argon plug
- No additional cables and plugs
- No LuerLock connection
- No risk of incorrect connection



# Advantages

- Excellent coagulation effect
- No carbonization
- Limited depth of thermal damage
- Non-contact coagulation
- No sticking-effect at the electrode tip







# URO/GYN



- Designed for bipolar and monopolar resections in urology and gynecology
- 9 different effects in each mode
- Automatic power regulation
- Two models available (26Fr. and 18,5 Fr.)

# ⌘ Monopolar modes

- For use in non-conductive liquid, e. g. glycine, deionized water



# Bipolar modes

- For use in an electrically conductive liquid, e. g. a saline solution



# Arthroscopy



# Arthroscopy modes

- **Max. 250W** (in CUT)
- **Max. 200W** (in COAG)
- **9 effects**
- **Monopolar modes** for use in a non-conductive liquid, e. g. glycine
- **Bipolar modes** for use in conductive liquid, e.g. a saline solution

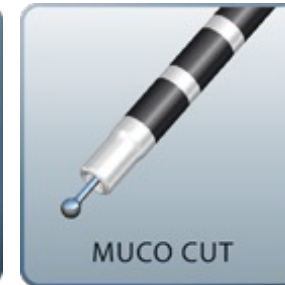
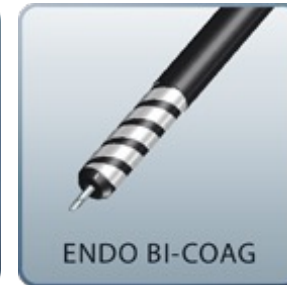


# Gastroenterology



# Gastroenterology modes

- Max. 400W in CUT
- Max. 25W in ENDO SPRAY
- 9 effects in each mode
- Dynamic cutting system for optimal effect
- BI-COAG mode for bipolar haemostatic probe





# Modes activation

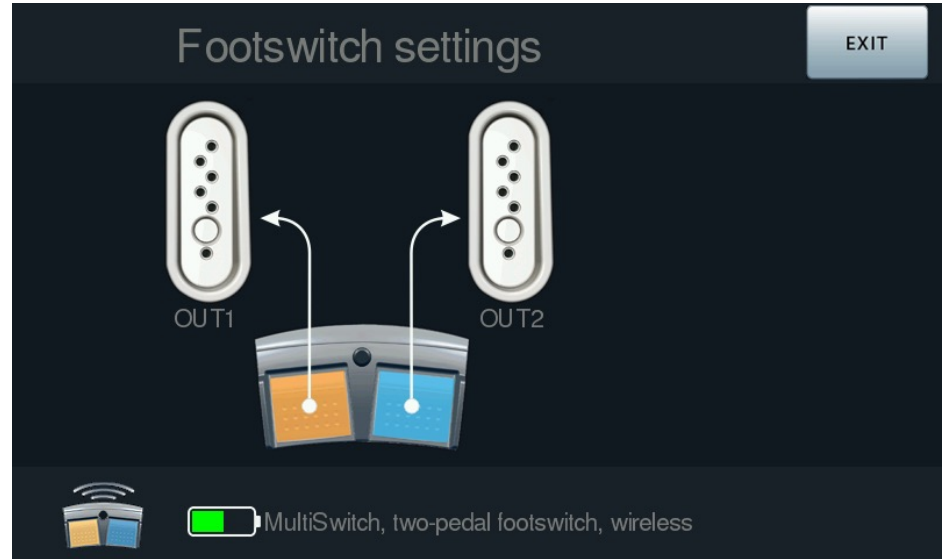


# How to activate modes ?

- Handswitch
- Footswitch
- AutoStart (in bipolar Coagulation)

# Footswitch

- Recognition of connected footswitch
- Wired or wireless connection
- Assigning the buttons to different outputs
- Battery level indicator

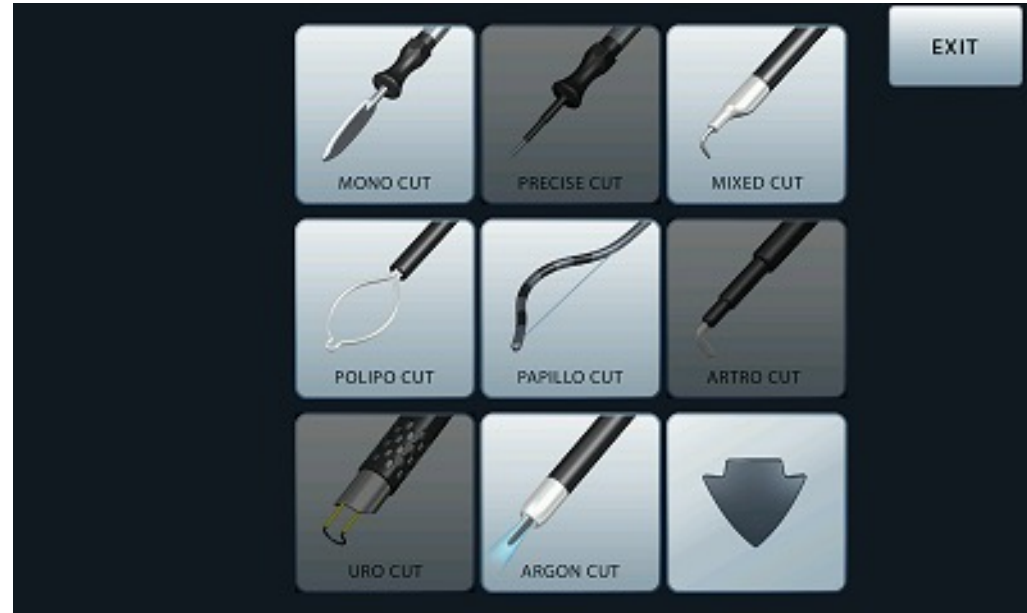




**CUSTOMIZATION**

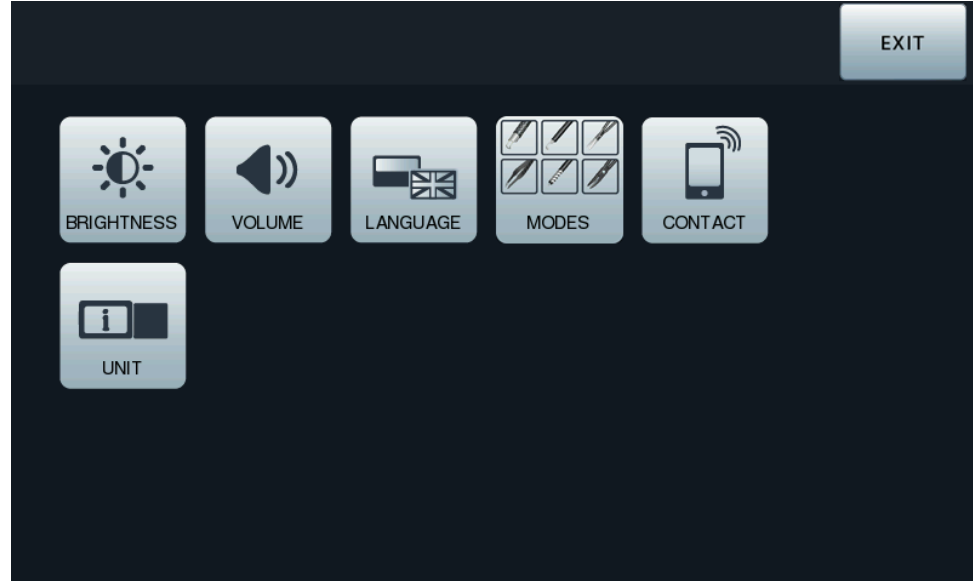
# Customization

- Possibility to deactivate modes which are not used
- The user decides which modes are visible on main screen



# Customization

- Brightness regulation
- Volume regulation
- Language selection



# Contact card



# Technical summary

- Operation frequency: 333 kHz
- NEM system
- ThermoStapler® – up to 300W // 9 effects
- Monopolar cutting – up to 400W // 9 effects
- Monopolar Coagulation – up to 200W // 9 effects
- Bipolar cutting – up to 400W // 9 effects
- Bipolar Coagulation – up to 120W /AutoStop/
- Argon flow – up to 10 l/min
- 220-240V or 110-120V





# ADDITIONAL EQUIPMENT

# TinyLine Trolley

- Case for argon cylinder
- Basket for accessories
- Four turning wheels
- Two locks



# Footswitches

- CUT & COAG activation
- Wired or wireless
- Waterproof
- Two or three switches option





**Thank you for your attention !**