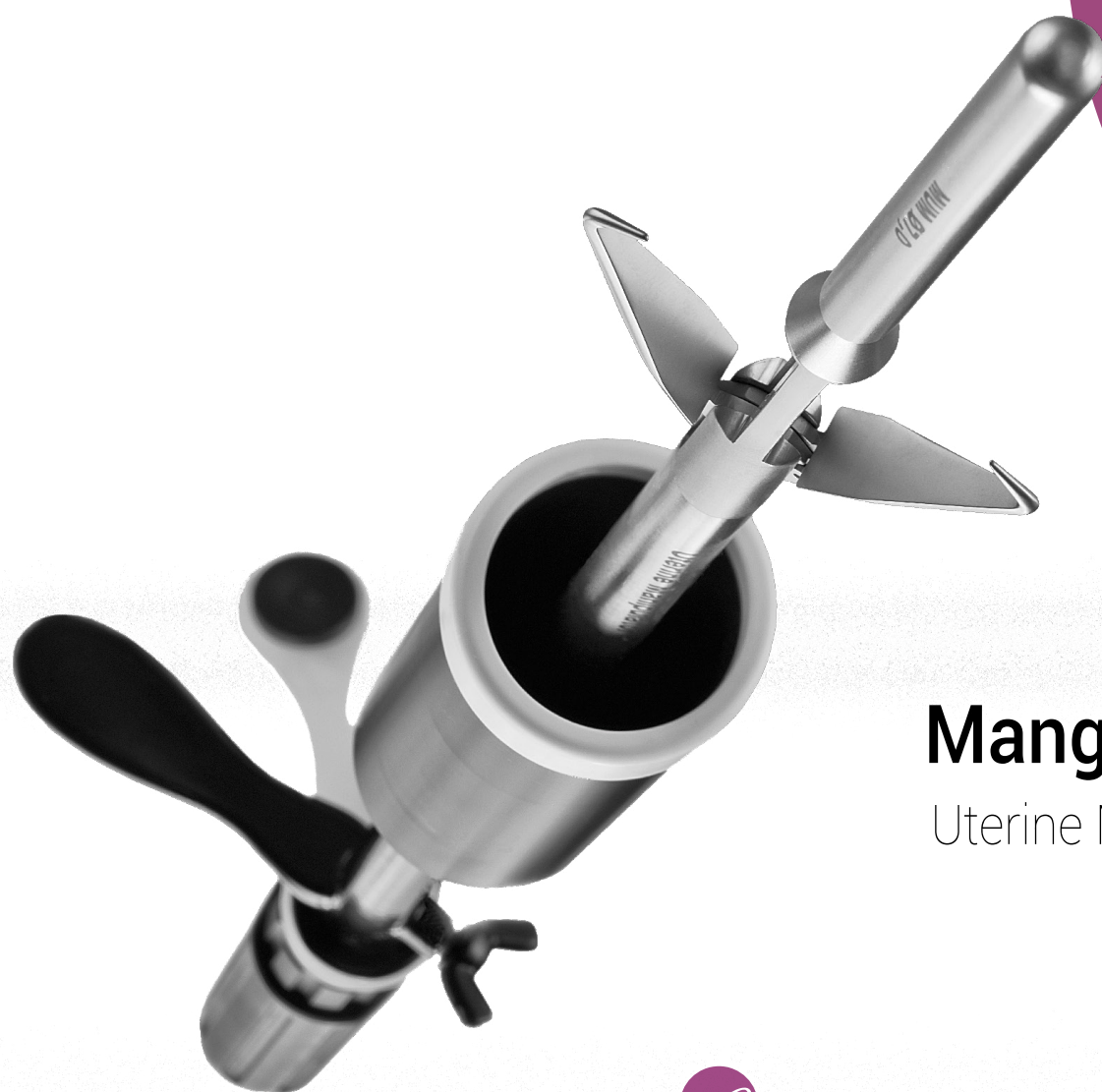


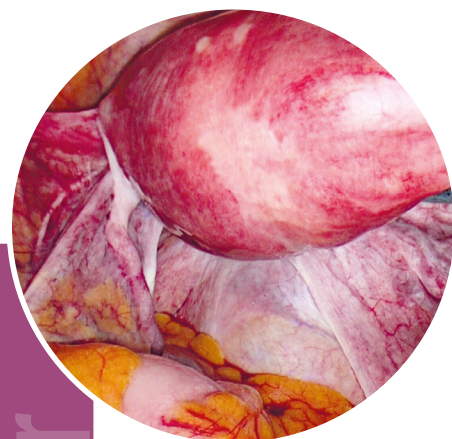


imaging all the women



Mangeshikar

Uterine Manipulator



The Mangeshikar Uterine Manipulator

Reusable but so easy to use!

A cap allowing to perform easy total hysterectomies is integrated in this reusable uterine manipulator.

In addition, it allows the uterus to be properly isolated from the bladder and the ureter, protecting both during the electrosurgical resections.

The assembly of the product is amazingly simple and its use extremely effective, with among other highlights: airtightness, usability and uterine holding/fixation.



Efficient holding of the uterus

The Pozzi forceps securely hold the uterine cervix during procedures.



A removable cap

Once the intra-uterine insert positioned inside the uterus and the Pozzi forceps fixed, gently slide the cap around the uterine cervix and lock it.

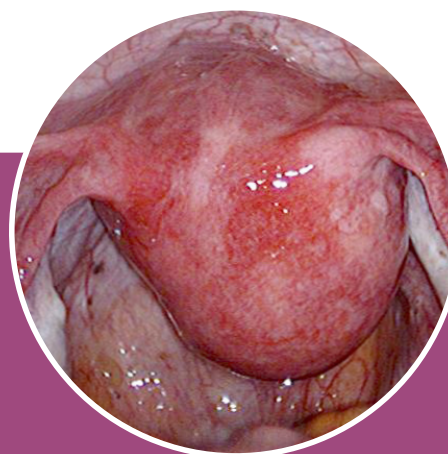


Monitor your hysterectomies from A to Z

The different diameters of caps and the different sizes of intra-uterine inserts allow you to match all patients' morphologies, improving both handling and accuracy during the procedure.

The cap will serve as a guide, highlighting the front and rear cul-de-sacs. Its ceramic circumference guarantees resistance to all conditions. No melting risk as it happens too often with plastic caps!

After taking out the uterus, the cap being removable, you can put it back in the vagina to keep the airtightness and finish the surgery in very good conditions.



Fast and easy assembly!

Six steps and less than a minute to have a fully assembled and functional uterine manipulator!

An intuitive mounting process memorized from the first use. Ergonomics and ease of use are no longer the prerogative of single-use manipulators!

References and features:

Handle

With Pozzi forceps rotation module

Ref. D300 120 100



Outer sheath

With fixation screw

Ref. D300 120 101



Inner sheath

Ref. D300 120 102



Pozzi forceps

For cervical holding

Ref. D300 120 107



Sliding sheath

To use with cap

Ref. D300 120 103



Cap 35mm

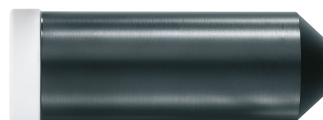
With white insulating ring

Ref. D300 120 104

Cap 40mm

With white insulating ring

Ref. D300 120 105



Cap 45mm

With white insulating ring

Ref. D300 120 106

Intra-uterine insert 4x40mm

Ref. D300 120 108

Intra-uterine insert 5x50mm

Ref. D300 120 109

Intra-uterine insert 6x60mm

Ref. D300 120 110

Intra-uterine insert 7x70mm

Ref. D300 120 111

Intra-uterine insert 8x80mm

Ref. D300 120 112

Intra-uterine insert 8x120mm

Ref. D300 120 113

Intra-uterine insert 8x150mm

Ref. D300 120 114

