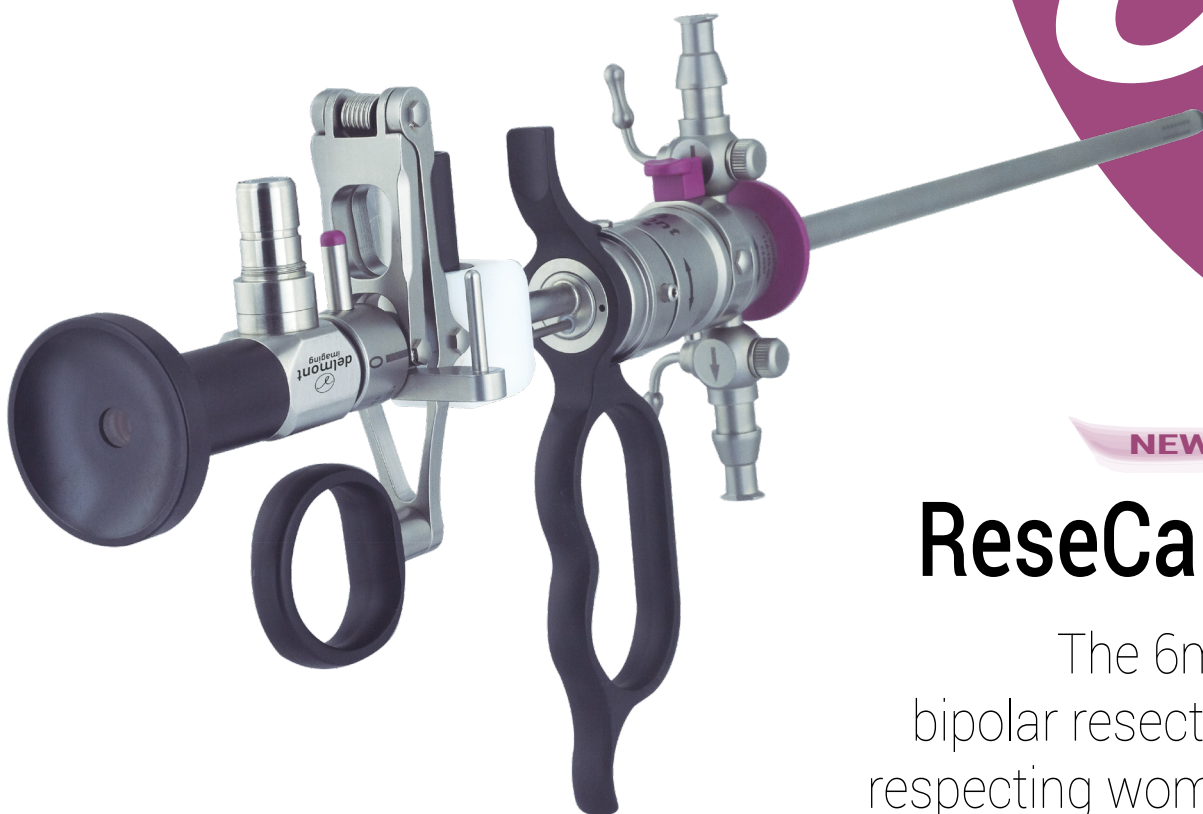




imaging all the women



NEW

ReseCare

The 6mm
bipolar resection
respecting women



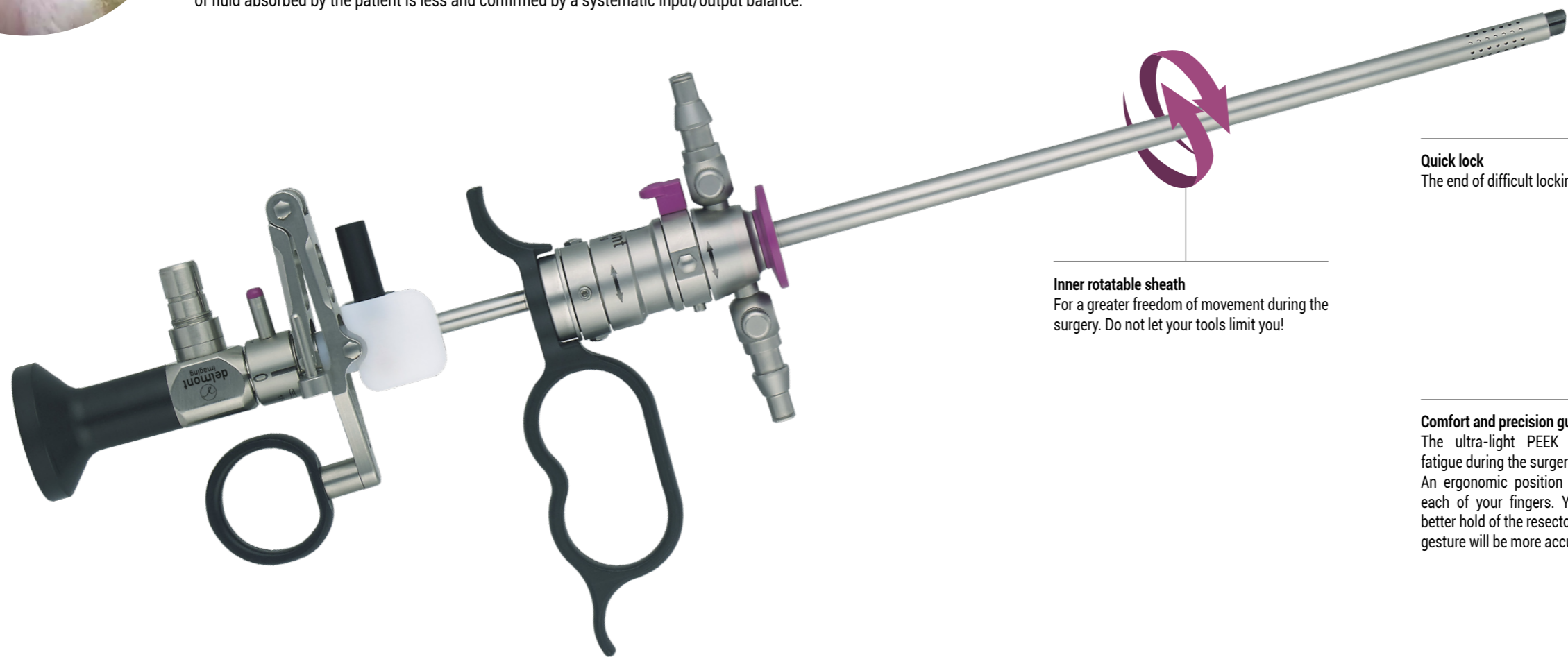


A 18.5Fr. only resectoscope

Small, but efficient!

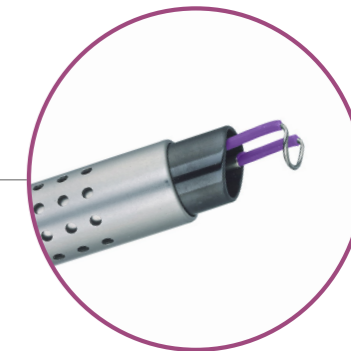
The advantages of this small diameter are numerous, both for the surgeon and the patient. With **ReseCare**, your surgical gesture is precise but also faster since the stages of dilation are less numerous. The chips being small, their presence is less penalizing for your vision and your comfort of work.

ReseCare respects your patients. The insertion resistance is naturally reduced and the use facilitated, even for menopausal women or with a stenotic cervical canal. As a result, the volume of fluid absorbed by the patient is less and confirmed by a systematic input/output balance.



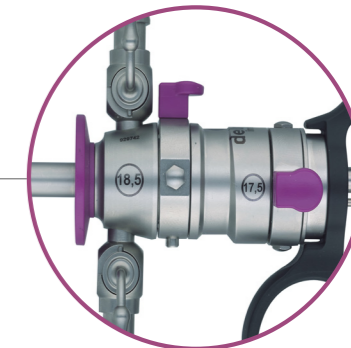
Quality to the last detail

A good image also results from a controlled and performing «aspiration-irrigation» couple. The black ceramic eliminates all reflections.



Quick lock

The end of difficult lockings.



Inner rotatable sheath

For a greater freedom of movement during the surgery. Do not let your tools limit you!



Comfort and precision guaranteed

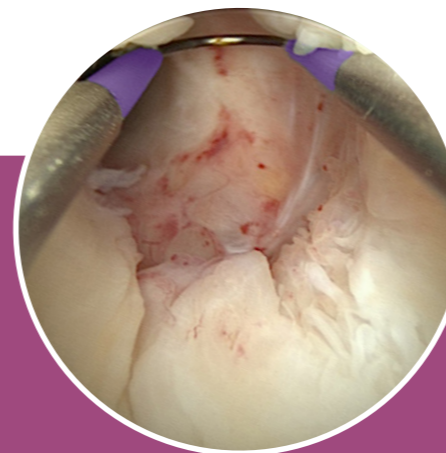
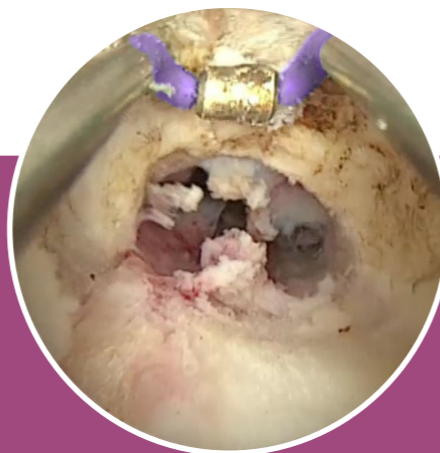
The ultra-light PEEK handle avoids fatigue during the surgery. An ergonomic position is provided for each of your fingers. You will have a better hold of the resectoscope and your gesture will be more accurate.

Bipolar resection

The advantages of this now widely used technology are twofold, both related to the safety of your patients.

First, the electric current no longer passes through the patient but directly returns to the generator through the resectoscope itself. The risks of burns due to the diffusion currents and those of synechia due to damaged endometrium are thus drastically reduced.

But also and above all, a monopolar resectoscope has to use glycolle whose absorption by the patient is source of ionic disorders that can lead to death. In contrast, instead of glycolle, a bipolar resectoscope uses a saline solution which is not toxic, and moreover less expensive. Connected to a bipolar generator, **ReseCare** offers you this extra serenity. It is nevertheless compatible and works perfectly with all monopolar generators.



HD Hysteroscope : unmatched performances and outstanding durability

Our latest generation of lenses, designed to take full advantage of HD, provides detailed and perfectly clear images even in the backgrounds. This hyper resolution together with a real homogeneous light distribution provides a huge depth of field. The whole image will be sharp! Our HD hysteroscope is of course autoclavable. Its three separate tubes design makes it resistant, durable but also easily repairable in case of accident.

ReseCare references and features:

HD Hysteroscope, 2.9mm, 12°

Autoclavable, L: 300mm

Ref. D300 100 004



Outer sheath, 18.5Fr.

Double flow. Quick lock.

Ref. D300 130 00000



Inner sheath, 17.5Fr.

Rotatable

Ref. D300 130 001



Passive working element

Compatible monopolar & bipolar

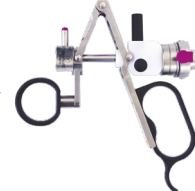
Ref. D300 130 002



Active working element

Compatible monopolar & bipolar

Ref. D300 130 009



Light cable

Autoclavable, Ø: 3.5mm, L : 2.3m, supplied with Storz connectors

Ref. D200 150 500



NEW

Electrodes:

| | Description | Reference | |
|--|----------------------------------|--|--------------|
| | | Sterile, single use (Delivery in boxes of 10) | Reusable |
| | Cutting loop, 30° | D300 140 067 | D300 140 000 |
| | Cutting loop, straight | D300 140 068 | D300 140 001 |
| | Coagulating electrode knife | D300 140 069 | D300 140 002 |
| | Coagulating electrode rollerball | D300 140 070 | D300 140 003 |

Accessories:

Obturator

Quick lock

Ref. D300 130 003



Sterilization tube

Autoclaving and storage of electrodes

Ref. D200 160 003



NEW

ReseCare sterilization basket

Autoclavable. 480x240x70mm. With personalized silicone holders

Ref. D200 160 504



Erbe bipolar resection cable

VIO300D

Ref. D200 190 001

Covidien bipolar resection cable

ForceTriad

Ref. D200 190 000