

# iFlow accessories, references and features:

## iFlow. Irrigation and suction pump

Hysteroscopy program included:  
 - Pressure range: 15 to 150 mmHg  
 - Flow range: 50 to 500 mL/min  
 Suction power: maximum 2 L/min  
 Power supply: (100-240 V~; 50/60 Hz)  
 Power consumption: 80 VA  
 Dimensions: 380 x 148 x 388 mm  
 Weight: 6.3 kg  
 Classification: Class I, Type BF, IP 41

Ref. D110 100 500



## Transponder. Laparoscopy Program

- Pressure range: not configurable  
 - Flow range: 1.0 to 1.8 L/min

Ref. D110 100 004

## Transponder. Urology Program

- Pressure range: 10 to 90 mmHg  
 - Flow range: 25 to 500 mL/min

Ref. D110 100 009



## Transponder. Arthroscopy Program

- Pressure range: 5 to 150 mmHg  
 - Flow range: 0.1 to 1.8 L/min

Ref. D110 100 008

## Single-use irrigation tube

Provided sterile. Box of 10 tubes  
 With RFID technology

Ref. D110 100 001



## Multi-use irrigation tube

Reusable 20 times  
 With RFID technology

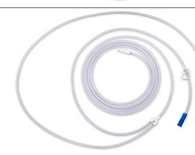
Ref. D110 100 005



## Disposable suction tube. With 2 connectors

Provided sterile. Box of 10 tubes

Ref. D110 100 002



## Vacuum suction tube with filter

Usable for a period of 30 days

Ref. D110 100 003



## Container for secretions - 3 Liters

Delivered in pairs

Ref. D110 100 006



## Digital scale for container

Allows calculation of the Input/output balance sheet

Ref. D110 100 000



## Double foot pedal control

On / Pause / Stop irrigation

Ref. D110 100 010



Non contractual document - Réf. D900 700 063 A - 09/2018 - Copyright © 2016 DELMONT IMAGING. All rights reserved. No information or any part of this document may be reproduced or transmitted in any form without the prior permission of DELMONT IMAGING.



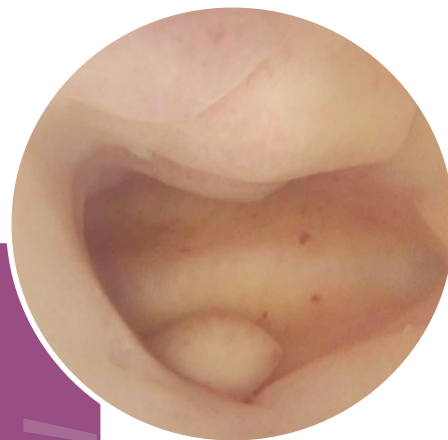
imaging all the women



iFlow

Outstanding performances  
for safer surgeries

iFlow



## Highest safety standards

And so many options!

With iFlow we have made every effort to ensure the safety of your patients. Control of the sterility of irrigation tubes thanks to RFID technology, accurate pressure measurements that prevent any intrauterine overpressure, calculation of the deficit to quickly prevent any problem (perforation of the uterus or fluid absorption) or permanent display of the key information for a better reactivity of the medical team. Security is at the heart of the product.

Among the many possibilities of iFlow, we can mention the controlled aspiration for a clear vision, the detection of instruments to automatically compensate the pressure losses, not to forget the transponders system for each application (laparoscopy, urology and arthroscopy) which simplifies the training of medical staff and the organization of operating theatres, while significantly reducing investments. iFlow won't fail to surprise you!



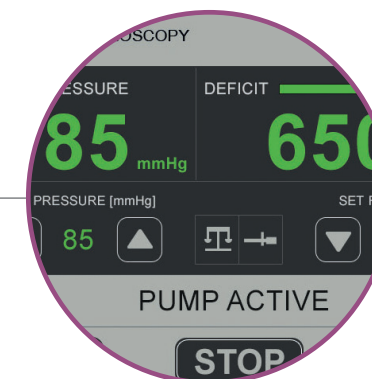
### User-friendly interface

Pressure and flow rate settings are immediately accessible.

Messages and alerts are clearly displayed and allow you to take the right decisions.

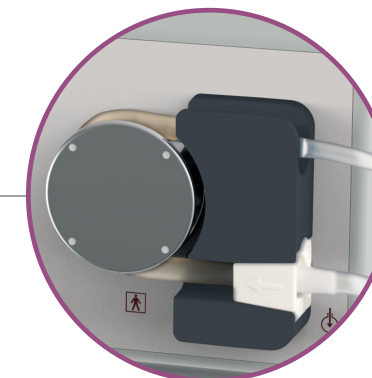
### Monitoring the deficit

The digital scale calculates and clearly displays the deficit. An alert will inform you in case of an incident such as excessive fluid absorption by the patient or perforation of the uterus.



### Out of the box solution

The insertion of the tubing is very simple and allows to start at once.



### Suction for a clearer vision

Thanks to its suction module, which power you directly control, iFlow provides you with an optimal field of vision.



## An innovative feature: instruments detection

The resistance imposed by your instrument when connecting the irrigation tube causes a loss of pressure and a decrease in flow rate. The activation of this new feature allows iFlow to detect these variations and automatically adapt its parameters to fit the set pressure with unmatched accuracy! Intrauterine pressure is always the one you have decided.



## RFID technology

RFID tracking for irrigation tubes (radio-identification) greatly increases security for the patient. At the introduction of an irrigation tube, iFlow automatically checks the validity of this tube. The pump controls both the type of tube and the number of uses.

Don't hesitate any longer! Single-use tubing may only be used once and reusable tubing may not be used beyond the 20 specified cycles.