

The complete **ReseCare** set includes :

Passive set
Ref. D400 100 011

or

Active set
Ref. D400 100 013

HD Hysteroscope, 2.9mm, 12°
Autoclavable, L: 300mm
Ref. D300 100 004



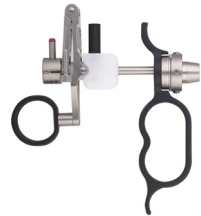
Outer sheath, 18.5Fr.
Double flow. Quick lock.
Ref. D300 130 000



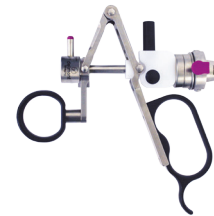
Inner sheath, 17.5Fr.
Rotatable
Ref. D300 130 001



Passive working element
Compatible monopolar & bipolar
Ref. D300 130 002



Active working element
Compatible monopolar & bipolar
Ref. D300 130 009



Cutting loop, 30°
Ref. D300 140 000



Cutting loop, straight
Ref. D300 140 001



Coagulating electrode rollerball
Ref. D300 140 003



Coagulating electrode knife
Ref. D300 140 002



Light cable
Autoclavable, Ø: 3.5mm, L : 2.3m, supplied with Storz connectors
Ref. D200 150 500



Optional accessories :

Obturator
Quick lock
Ref. D300 130 003



Sterilization tube
Autoclaving and storage of electrodes
Ref. D200 160 003



Sterilization basket
Autoclavable. 480x250x47mm. Supplied with a silicone mat and a lid
Ref. D200 160 500



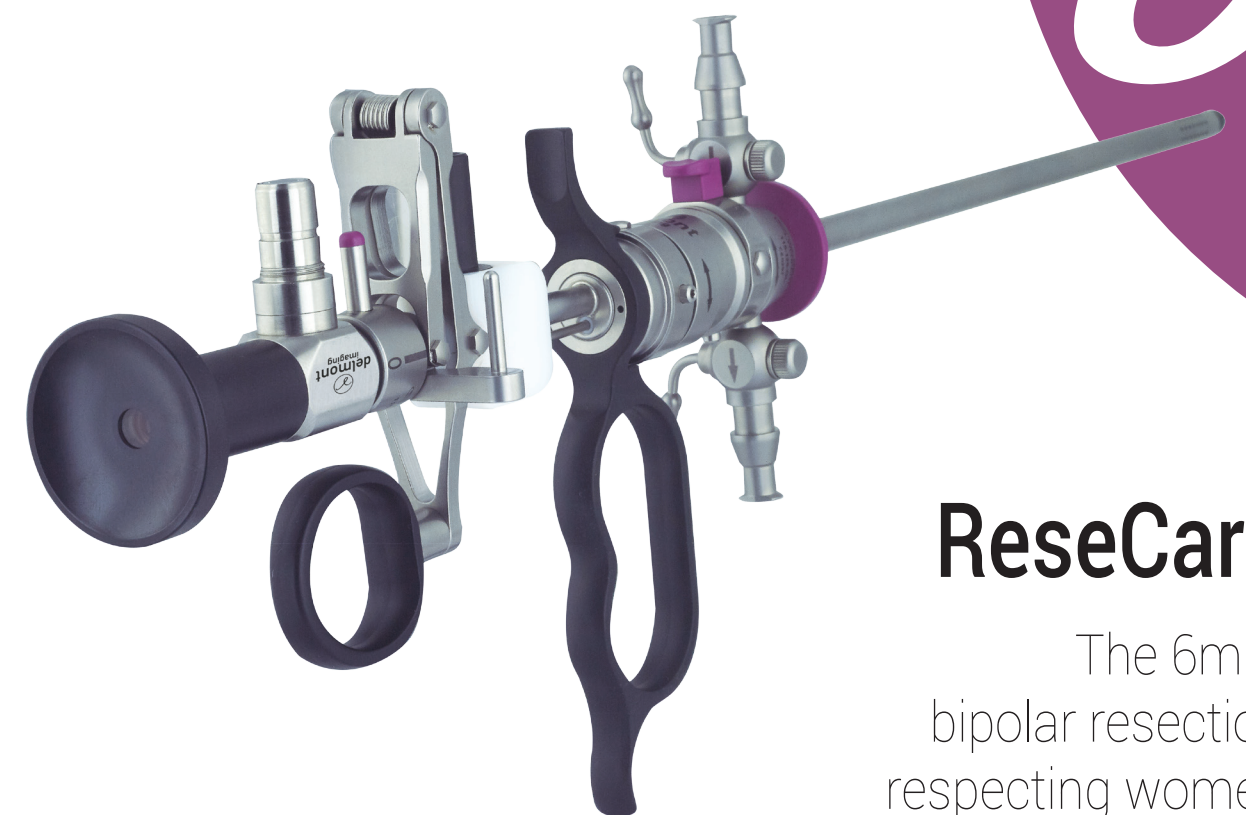
Covidien bipolar resection cable
ForceTriad
Ref. D200 190 000



Erbe bipolar resection cable
VIO300D
Ref. D200 190 001



imaging all the women



ReseCare
The 6mm
bipolar resection
respecting women

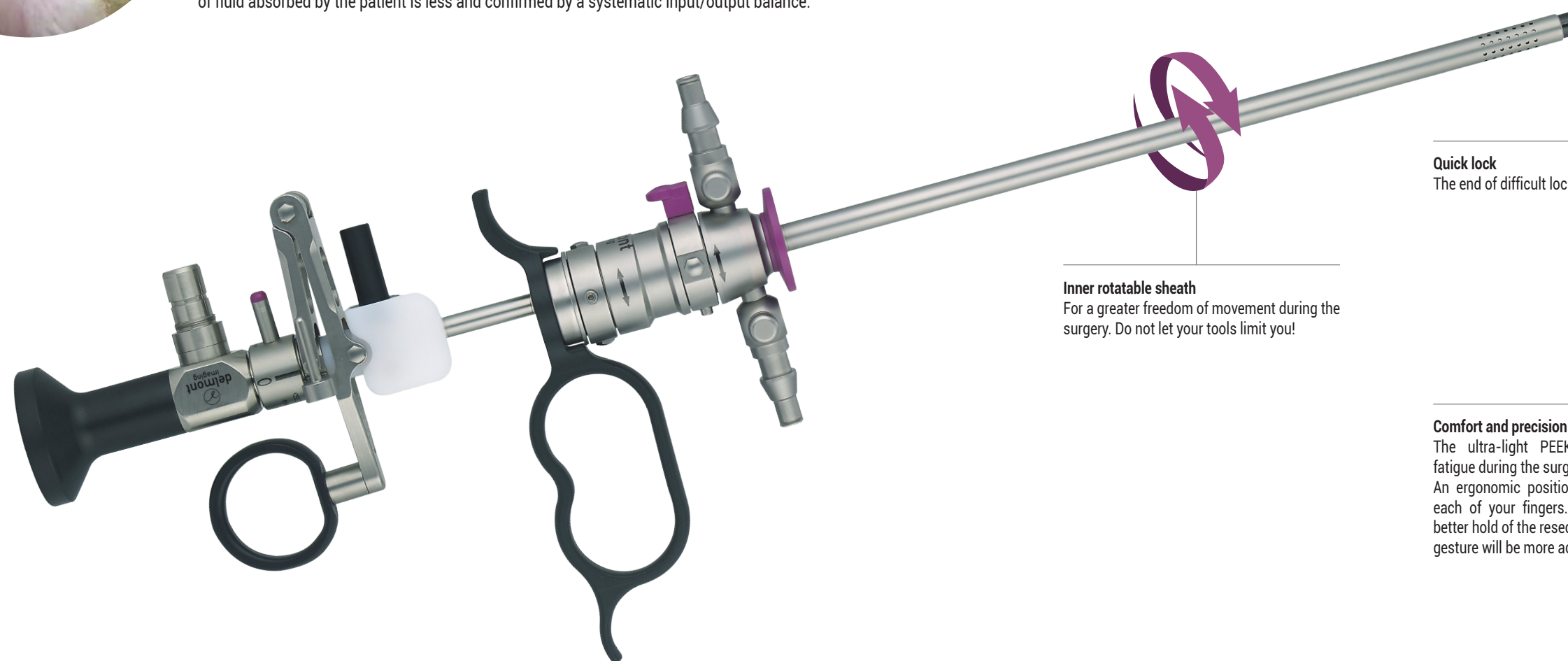


A 18.5Fr. only resectoscope

Small, but efficient!

The advantages of this small diameter are numerous, both for the surgeon and the patient. With **ReseCare**, your surgical gesture is precise but also faster since the stages of dilation are less numerous. The chips being small, their presence is less penalizing for your vision and your comfort of work.

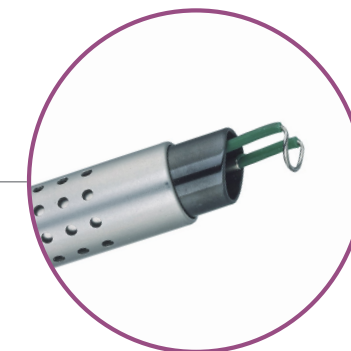
ReseCare respects your patients. The insertion resistance is naturally reduced and the use facilitated, even for menopausal women or with a stenotic cervical canal. As a result, the volume of fluid absorbed by the patient is less and confirmed by a systematic input/output balance.



Inner rotatable sheath
For a greater freedom of movement during the surgery. Do not let your tools limit you!

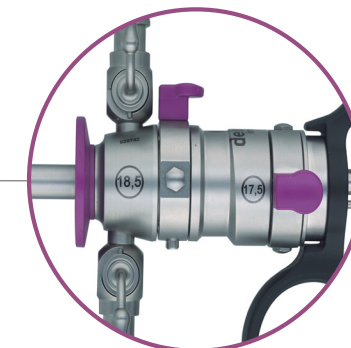
Quality to the last detail

A good image also results from a controlled and performing «aspiration-irrigation» couple. The black ceramic eliminates all reflections.



Quick lock

The end of difficult lockings.



Comfort and precision guaranteed

The ultra-light PEEK handle avoids fatigue during the surgery. An ergonomic position is provided for each of your fingers. You will have a better hold of the resectoscope and your gesture will be more accurate.

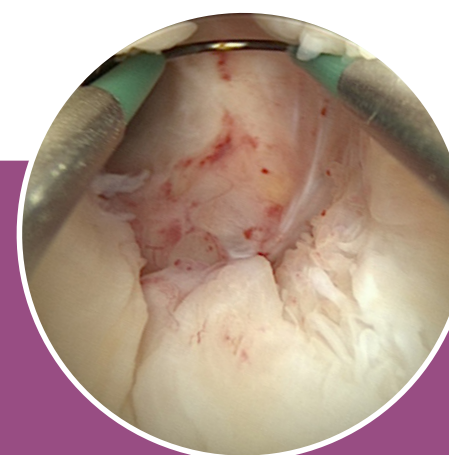
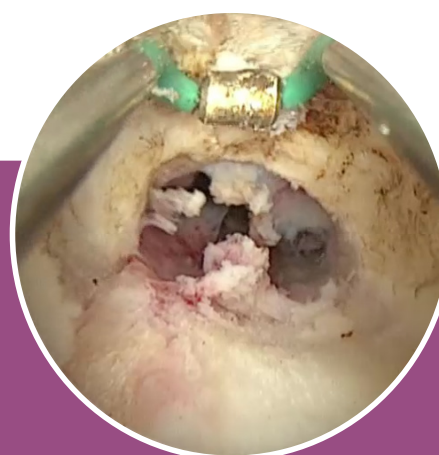


Bipolar resection

The advantages of this now widely used technology are twofold, both related to the safety of your patients.

First, the electric current no longer passes through the patient but directly returns to the generator through the resectoscope itself. The risks of burns due to the diffusion currents and those of synechia due to damaged endometrium are thus drastically reduced.

But also and above all, a monopolar resectoscope has to use glycolle whose absorption by the patient is source of ionic disorders that can lead to death. In contrast, instead of glycolle, a bipolar resectoscope uses a saline solution which is not toxic, and moreover less expensive. Connected to a bipolar generator, **ReseCare** offers you this extra serenity. It is nevertheless compatible and works perfectly with all monopolar generators.



HD Hysteroscope : unmatched performances and outstanding durability

Our latest generation of lenses, designed to take full advantage of HD, provides detailed and perfectly clear images even in the backgrounds. This hyper resolution together with a real homogeneous light distribution provides a huge depth of field. The whole image will be sharp! Our HD hysteroscope is of course autoclavable. Its three separate tubes design makes it resistant, durable but also easily repairable in case of accident.